



Customer Service
Service client
Kundendienst
Servicio a clientes
Assistenza clienti
Apoio ao Cliente

BDA, LLC.
15525 Woodinville-Redmond Rd NE
Woodinville, WA 98072

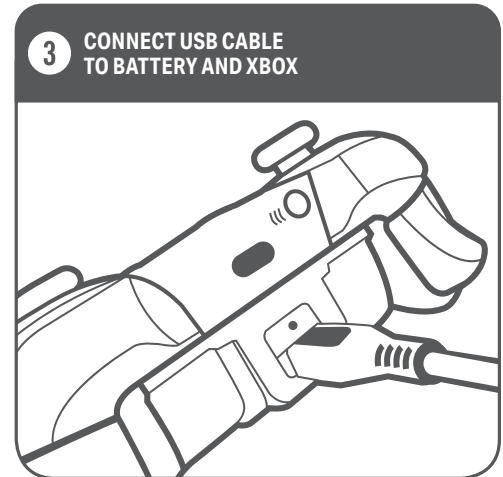
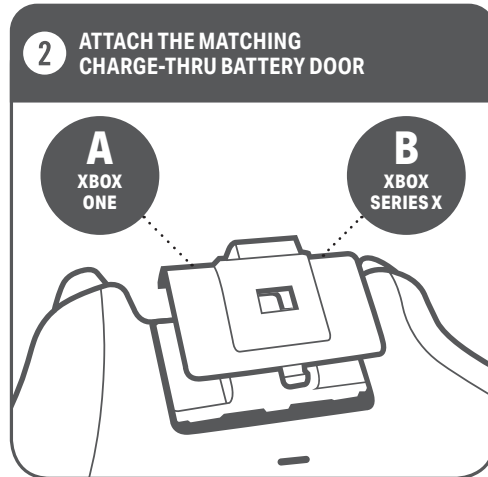
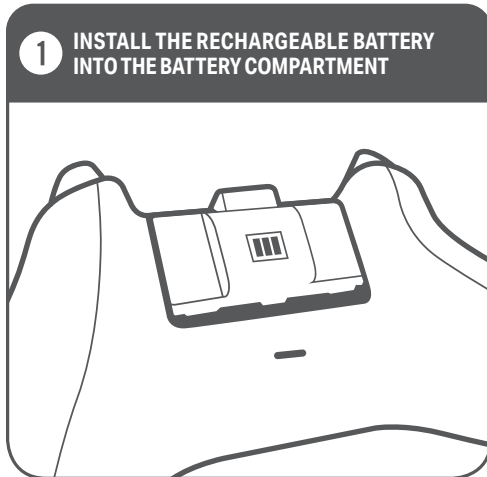
PLAY AND CHARGE KIT

USER MANUAL
Manuel de l'utilisateur
Bedienungsanleitung
Manual de usuario
Manuale per l'uso
Manual do usuário



Two year limited warranty
For warranty details or support with your authentic PowerA accessories, please visit PowerA.com/Support.

Beschränkte 2-Jahre-Garantie Informationen zur Garantie oder Unterstützung zu Ihrem PowerA-Originalzubehör finden Sie unter PowerA.com/Support.
Garantía limitada de dos años Si quieres más información sobre la garantía o necesitas ayuda con tus accesorios originales de PowerA, visita PowerA.com/Support.
Garantie limitée de deux ans Pour plus de détails sur la garantie ou pour obtenir une assistance pour vos accessoires PowerA d'origine, veuillez consulter le site PowerA.com/Support.
Garanzia limitata di due anni Per i dettagli sulla garanzia o per richiedere assistenza per i tuoi accessori PowerA autentici, visita la pagina PowerA.com/Support.
Garantia limitada de dois anos Para mais informações sobre a garantia ou os acessórios originais da PowerA, visita PowerA.com/Support.



ENGLISH

CONTENTS:

- (2) 1100mAh Rechargeable Batteries
- Charge-thru Battery Doors
- (2) 'A' for Xbox One and (2) 'B' for Xbox Series X
- 10 ft (3m) USB Charge Cable
- User Manual

USE:

1. Install the Rechargeable Battery into the battery compartment of your Xbox Wireless Controller.
2. Attach the correct Charge-thru Battery Door to the back of the Xbox Wireless Controller after checking underside of door: 'A' for Xbox One and 'B' for Xbox Series X.
3. Attach the Charge-thru Battery Door to your controller.
4. Connect USB cable to battery and the Xbox.
5. Check LED color for charge status; Amber while charging and White once fully charged.

Note: For battery charge level, check Xbox on-screen display. Battery can also be charged when not installed to controller. Controller remains functional when charging while battery is installed.

CHARGING:

- Only use original/included USB Charging Cable.
- Do not connect USB Charge Cable to any USB AC adapters.
- Do not charge your 1100mAh Rechargeable Batteries on flammable surfaces i.e. mattresses, couches, and other flammable materials.
- Do not leave batteries unattended for long periods of time.
- Do not cover your controller while charging with any blankets, pillows, bedding, etc.
- Ensure proper ventilation.

WARNING - BATTERY LEAKAGE

Leakage of ingredients contained within the battery pack, or the combustion of product ingredients, can cause personal injury as well as damage to game controller. Avoid contact with skin. If contact occurs, immediately wash thoroughly with soap and water. If liquid leaking from a battery pack comes into contact with your eyes, immediately flush thoroughly with water and contact a medical professional for assistance.

BATTERY WARNING:

Do not attempt to replace the rechargeable battery yourself- you may damage the battery, which could

cause overheating, fire, and injury. The Lithium-ion battery in your device should be serviced or recycled by PowerA or an authorized provider and must be recycled or disposed of separately from household waste. Dispose of batteries according to your local environment laws and guidelines. Do not use or leave the product containing rechargeable batteries exposed to very high temperature (e.g. at strong direct sunlight or in a vehicle in extremely hot weather). Otherwise, it can overheat, catch fire, or the performance will degenerate, and the service life will be shortened. Do not use the rechargeable battery item in a location where static electricity is rich, otherwise, the internal safety devices may be damaged, causing a harmful situation. In case the electrolyte gets into the eyes due to the leakage of battery, do not rub eyes! Rinse eyes with clean running water and seek medical attention immediately. Otherwise, it may injure eyes or cause a loss of sight. If the battery gives off an odor, generates heat, or in any way appears abnormal during use, recharging or storage, immediately remove it from battery charger and place it in a sealed vessel such as a metal box. Be aware discarded batteries may cause fire, do not heat the controller or throw it into fire.

TROUBLESHOOTING


- Q1: The Play and Charge Kit Rechargeable Battery is not charging.
A1: The Rechargeable Battery needs a powered USB source to charge. Confirm that your Xbox is powered ON.
A2: Confirm the USB Charge Cable is connected to the Rechargeable Battery and/or the Xbox correctly.
A3: Confirm the Rechargeable Battery and Charge-thru Battery Door is installed correctly.
Q2: The Play and Charge Kit Rechargeable Battery is not charging on the PowerA Charging Stand or Charging Station.
A1: Confirm the Xbox Wireless Controller is placed on the PowerA Charging Stand or Charging Station correctly.
A2: Confirm the Charging Stand or Charging Station is properly connected to a powered USB port.
A3: Confirm the Charging Stand or Charging Station charge cradle is pushed down in the charge position.
A4: If using the PowerA Charging Station, confirm it is properly connected to an AC Powered wall outlet.

SUPPORT

For support with your PowerA accessories, please visit PowerA.com/Support

REGIONAL COMPLIANCE SYMBOLS

More information available via web-search of each symbol name.

 The WEEE symbol informs the end-user about separate disposal requirements for WEEE (Waste of electrical and electronic equipment) as required per the Article 11(2) of the WEEE Directive and prescribed by European standard EN50419:2005.

 CE (Conformité Européenne aka European Conformity) is a certification mark that indicates conformity with health, safety, and environmental protection standards for products sold within the European Economic Area.

 The Regulatory Compliance Mark is a visible indication of a product's compliance with all applicable ACMA (Australian Communications and Media Authority) regulatory arrangements, including all technical and record-keeping requirements regarding the electrical safety and/or electromagnetic compatibility (EMC).

FCC STATEMENT

This device complies with Part 15 of the FCC Rules. Operation is subject to the following two conditions: (1) this device may not cause harmful interference, and (2) this device must accept any interference received, including interference that may cause undesired operation. Warning: Changes or modifications to this unit not expressly approved by the party responsible for compliance could void the user's authority to operate the equipment. Note: This equipment has been tested and found to comply with the limits for Class B digital device, pursuant to Part 15 of the FCC Rules. These limits are designed to provide reasonable protection against harmful interference in a residential installation. This equipment generates, uses and can radiate radio frequency energy and, if not installed and used in accordance with the instructions, may cause harmful interference to radio communications. However, there is no guarantee that interference will not occur in a particular installation. If this equipment does cause harmful interference to radio or television reception, which can be determined by turning the equipment off and on, the user is encouraged to try to correct the interference by one or more of the following measures:
• Reorient or relocate the receiving antenna

- Increase the separation between the equipment and receiver
- Connect the equipment into an outlet on a circuit different from that to which the receiver is connected
- Consult the dealer or an experienced radio/TV technician for help.

CAN ICES-3(B)/NMB-3(B):

This device complies with Industry Canada license exempt RSS standard(s). Operation is subject to the following two conditions: (1) This device may not cause interference, and (2) this device must accept any interference, including interference that may cause undesired operation of the device.

AUSTRALIAN WARRANTY STATEMENT:

This product comes with guarantees that cannot be excluded under the Australian Consumer Law. You are entitled to a replacement or refund for a major failure and for compensation for any other reasonably foreseeable loss or damage. You are also entitled to have the goods repaired or replaced if the goods fail to be of acceptable quality and the failure does not amount to a major failure. If purchased within Australia or New Zealand, this product comes with a One-year warranty from date of purchase. Defects in the product must have appeared within One year from date of purchase, in order to claim the warranty. All warranty claims must be facilitated back through the retailer of purchase in accordance with the retailer's return policies and procedures. Any expenses incurred, as a result of returning the product to the retailer of purchase are the full responsibility of the consumer.

AU WHOLESALE DISTRIBUTOR:

Level 2, 2 Darling Street South Yarra, Australia VIC 3141
bluemouth.com.au Email: support@bluemouth.com.au
+61 (3) 9867 2666

MANUFACTURED BY:

Bensussen Deutsch & Associates, LLC. (BDA, LLC.)
15525 Woodinville-Redmond Rd.
NE Woodinville, WA 98072
BDAINC.com | POWERA.com

ADDITIONAL LEGAL

PowerA, and the PowerA logo are trademarks of Bensussen Deutsch and Associates, LLC. TM and © Bensussen Deutsch and Associates, LLC. Microsoft,

Xbox, Xbox "Sphere" Design, Xbox Series X, and Xbox One are trademarks of the Microsoft group of companies. All other trademarks are the property of their respective owners.

Xbox One X

Xbox Series X

FRENCH

CONTENU :

- (2) batteries rechargeables (1 100 mAh)
- (4) couvercles de batterie
- Câble de charge USB de 3 m
- Manuel de l'utilisateur"

UTILISATION :

- Placez la batterie rechargeable dans le compartiment dédié de votre manette sans fil Xbox.
- Fixez le couvercle approprié au dos de la manette sans fil Xbox pour la recharger, après avoir vérifié la lettre inscrite en dessous: « B » pour Xbox Series X et « A » pour Xbox One.
- Fixez bien ce couvercle à votre manette.
- Connectez le câble USB à la batterie et à la Xbox.
- Vérifiez la couleur du voyant de charge LED : il s'affiche en orange durant le chargement et en blanc une fois la batterie complètement chargée.

Remarque : Pour connaître le niveau de charge de la batterie, vérifiez les informations qui s'affichent sur l'écran de la Xbox. La batterie peut également être chargée hors de la manette. La manette reste fonctionnelle lors du chargement lorsque la batterie y est installée.

RECHARGE :

- N'utilisez que le câble de charge USB original/inclus.
- Ne connectez pas le câble de charge USB à un adaptateur secteur USB.
- Ne chargez pas vos batteries rechargeables de 1 100 mAh sur des surfaces inflammables, c'est-à-dire sur des matelas, des canapés et/ou autres matériaux inflammables.
- Ne laissez pas les batteries sans surveillance pendant une période prolongée.
- Ne couvrez pas votre manette de couvertures, oreillers, etc. pendant qu'elle charge.
- Assurez-vous que la zone est bien aérée.

DÉPANNAGE

Q1 : La batterie rechargeable du kit Play & Charge ne se recharge pas.

R1: La batterie rechargeable doit être connectée à un port USB alimenté pour pouvoir se recharger. Vérifiez que votre Xbox est bien allumée.

R2 : Vérifiez que le câble de charge USB est correctement connecté à la batterie rechargeable et/ou à la Xbox.

R3 : Vérifiez que la batterie rechargeable et son couvercle sont correctement installés.

Q2: La batterie rechargeable du kit Play & Charge ne se recharge pas sur le support ou la station de charge PowerA.

R1. Vérifiez que la manette sans fil Xbox est correctement installée sur le support ou la station de charge PowerA.

R2 : Vérifiez que le support ou la station de charge est correctement connecté à un port USB alimenté.

R3 : Vérifiez que la manette est bien enclenchée sur le support ou la station de charge en position active.

R4 : Si vous utilisez la station de charge PowerA, vérifiez qu'elle est correctement connectée à une prise électrique AC.

AVERTISSEMENT - FUITE DES BATTERIES

Toute fuite ou toute combustion des composants des batteries peut occasionner des blessures et endommager la manette de jeu. Évitez tout contact avec la peau. En cas de contact avec la peau, rincez immédiatement et abondamment la zone affectée à l'eau et au savon. Si le liquide s'écoulant des batteries entre en contact avec vos yeux, rincez immédiatement et abondamment à l'eau et consultez un professionnel de santé pour toute assistance.

L'émetteur/récepteur exempt de licence contenu dans le présent appareil est conforme aux CNR d'Innovation, Sciences et Développement économique Canada applicables aux appareils radio exempts de licence. L'exploitation est autorisée aux deux conditions suivantes: (1) L'appareil ne doit pas produire de brouillage; (2) L'appareil doit accepter tout brouillage radioélectrique subi, même si le brouillage est susceptible d'en compromettre le fonctionnement.

ITALIAN

CONTENUTO:

- (2) Batterie ricaricabili da 1100mAh
- (4) Sportelli della batteria con passante per la ricarica
- Cavo di ricarica USB da 3 m
- Manuale utente"

Xbox One X

Xbox Series X

USO:

- Inserire la batteria ricaricabile nel vano batteria del controller senza fili della Xbox.
- Applicare il corretto sportello della batteria con passante per la ricarica sul retro del controller senza fili dopo aver controllato la parte inferiore dello sportello: "B" per Xbox Series X e "A" per Xbox One.
- Applicare lo sportello della batteria con passante per la ricarica al controller.
- Collegare il cavo USB alla batteria e alla Xbox.
- Controllare il colore del LED per il livello di carica; ambra durante e bianco al termine della ricarica.

Nota: per lo stato di ricarica della batteria, controllare il display su schermo della Xbox. Si può anche caricare la batteria quando non è inserita nel controller. Il controller rimane funzionante durante la ricarica con la batteria inserita.

RICARICA:

- Utilizzare esclusivamente un cavo di ricarica USB originale/fornito in dotazione.
- Non collegare il cavo di ricarica USB ad adattatori CA USB.
- Non caricare le batterie ricaricabili da 1100mAh su superfici infiammabili, ad esempio materassi, divani e/o analoghi prodotti infiammabili.
- Non lasciare le batterie incustodite per lunghi periodi di tempo.
- Durante la fase di ricarica, non coprire il controller con coperte, cuscini, lenzuola etc.
- Prevedere un'adone ventilazione.

RISOLUZIONE DEI PROBLEMI

D1: la batteria ricaricabile del kit Gioca e Ricarica non funziona.

R1: per potersi ricaricare, la batteria ricaricabile deve essere collegata a una porta USB alimentata. Verificare che la Xbox sia ACCESA.

R2: verificare che il cavo di ricarica USB sia stato collegato correttamente alla batteria ricaricabile e/o alla Xbox.

R3: verificare che la batteria ricaricabile e lo sportello della batteria con passante per la ricarica siano stati installati correttamente.

D2: la batteria ricaricabile del kit Gioca e Ricarica non si carica nello stand di ricarica o nella stazione di ricarica PowerA.

R1. Verificare che il controller senza fili della Xbox sia stato posizionato correttamente sullo stand di ricarica o sulla stazione di ricarica PowerA.

R2: verificare che lo stand di ricarica o la stazione di ricarica siano state collegate correttamente ad una porta USB alimentata.

R3: verificare che l'alloggiamento di ricarica dello stand di ricarica o della stazione di ricarica sia stato spinto verso il basso nella posizione di ricarica.

R4: se si utilizza la stazione di ricarica PowerA, verificare che sia collegata correttamente all'impianto elettrico (CA).

AVVERTENZA - PERDITE DELLE BATTERIE

La fuoriuscita dei liquidi contenuti nel pacco batteria, o la loro combustione, possono provocare lesioni personali e danni al controller. Evitare il contatto con la pelle. In caso di contatto, sciacquare immediatamente e abbondantemente con acqua e sapone. Se del liquido fuoriuscito dal pacco batteria viene a contatto con gli occhi, sciacquarli immediatamente con acqua e rivolgersi a un operatore sanitario."

GERMAN

Xbox One X

Xbox Series X

INHALT:

- (2) wiederaufladbare Batterien (1100 mAh)
- (4) Direktlade-Batterieabdeckungen
- 3 m USB-Ladekabel
- Benutzerhandbuch"

ANWENDUNG:

- Den Akku in das Batteriefach des kabellosen Xbox-Controllers einlegen.
- Die richtige Direktlade-Batterieabdeckung auf der Rückseite des kabellosen Xbox-Controllers anbringen. Schauen Sie hierzu auf die Unterseite der Abdeckung: „B“ steht für Xbox Series X und „A“ für Xbox One.
- Die Direktlade-Batterieabdeckung am Xbox Controller anbringen.
- Das USB-Kabel mit dem Akku und der Xbox verbinden.
- Die LED-Farbe per den Ladestatus prüfen: gelb bei laufendem Ladevorgang und weiß bei beendetem Ladevorgang.

Hinweis: Den Akkuladestatus mit der Ladeanzeige auf dem Xbox-Display überprüfen. Der Akku kann auch geladen werden, wenn er nicht im Controller eingesetzt ist. Der Controller bleibt funktionsbereit, wenn der eingelegte Akku aufgeladen wird.

AUFLADEN:

- Ausschließlich das Original- oder mitgelieferte USB-Ladekabel verwenden.
- Das USB-Ladekabel nicht an andere USB-Netzteile anschließen.

- Die 1100-mAh-Akkus nicht auf brennbaren Oberflächen aufladen wie z. B. Matratzen, Sofas und anderen feuergefährlichen Materialien.
- Akkus nicht längere Zeit unbeaufsichtigt lassen.
- Den Controller beim Aufladen nicht mit Decken, Kissen, Bettzeug usw. abdecken.
- Es muss ausreichende Belüftung sichergestellt werden.

FEHLERBEHEUG

F1: Der Akku aus dem Spiel- und Lade-Kit lädt nicht.
A1: Zum Aufladen braucht der Akku eine mit Strom versorgte USB-Quelle. Vergewissern Sie sich, dass Ihre Xbox eingeschaltet ist.

A2: Stellen Sie sicher, dass das USB-Ladekabel richtig am Akku und/oder der Xbox eingesteckt ist.

A3: Überprüfen Sie, dass der Akku und die Direktlade-Batterieabdeckung richtig angebracht sind.

F2: Der Akku aus dem Spiel- und Lade-Kit lädt nicht auf der PowerA-Ladestation.

A1. Stellen Sie sicher, dass der kabellose Xbox-Controller richtig auf der PowerA-Ladestation aufliegt.

A2: Vergewissern Sie sich, dass die Ladestation richtig an einem mit Strom versorgten USB-Port angeschlossen ist.

A3: Überprüfen Sie, dass die Aufnahme der Ladestation ganz nach unten in die Ladeposition gedrückt wurde.

A4: Wenn Sie eine PowerA-Ladestation verwenden, vergewissern Sie sich, dass die Ladestation richtig an eine Wandsteckdose angeschlossen ist.

WARNUNG – AUSLAUFEN DER BATTERIE

Das Austreten von im Akku-Pack enthaltenen Bestandteilen oder die Verbrennung der Bestandteile des Produkts kann zu Verletzungen sowie zur Beschädigung des Controllers führen. Kontakt mit der Haut vermeiden. Bei Kontakt umgehend gründlich mit Seife und Wasser waschen. Wenn aus dem Akku-Pack ausgelaufene Flüssigkeit mit den Augen in Kontakt kommt, umgehend und gründlich mit Wasser ausspülen und einen Arzt zu Rate ziehen.

SPANISH

Xbox One X

Xbox Series X

CONTENIDO:

- (2) baterías recargables de 1100 mAh
- (4) baterías con tapa recargable
- Cable de carga USB de 3 m (10 pies)
- Manual de usuario

USO:

- Instala la batería recargable en el compartimento para baterías del mando inalámbrico de la Xbox.
- Coloca la batería con tapa recargable correcta en la parte trasera del mando inalámbrico de la Xbox después de comprobar en la parte inferior de la tapa que: "B" es para Xbox Series X y "A" es para Xbox One.
- Coloca la batería con tapa recargable en tu mando.
- Conecta el cable USB a la batería y la Xbox.
- Comprueba el color del LED de estado de carga; Ámbar mientras se carga y Blanco cuando está totalmente cargada.

Nota: para el nivel de carga de la batería, comprueba la pantalla de la Xbox. La batería también se puede cargar cuando no está instalada en el mando. El mando sigue funcionando cuando se carga mientras la batería está instalada.

CARGA:

- Utiliza únicamente el cable de carga USB original que se incluye.
- No conectes el cable de carga USB a ningún adaptador de CA USB.
- No cargues las baterías recargables de 1100 mAh sobre superficies inflamables, por ejemplo, colchones, sofás o cualquier otro material inflamable.
- No dejes las baterías desatendidas durante períodos de tiempo prolongados.
- No cubras el mando con ninguna manta, almohada, ropa de cama, etc. mientras se está cargando.
- Asegúrate de que haya una buena ventilación."

RESOLUCIÓN DE PROBLEMAS

- P1: La batería recargable del Kit Carga y Juego no se carga.
R1: La batería recargable necesita una fuente USB encendida para cargarse. Comprueba que tu Xbox está encendida.
R2: Comprueba que el cable de carga USB está conectado a la batería recargable y/o a la Xbox correctamente.
R3: Comprueba que la batería recargable y la batería con tapa recargable están instaladas correctamente.
P2: La batería recargable del Kit Carga y Juego no se carga en el soporte de carga o la estación de carga de PowerA.
R1. Comprueba que el mando inalámbrico de la Xbox está colocado en el soporte de carga o la estación de carga de PowerA correctamente.
R2: Comprueba que el soporte de carga o la estación de carga está conectado correctamente a un puerto USB que reciba alimentación.
R3: Comprueba que la base de carga del soporte de carga o de la estación de carga se encuentra en la

posición de carga adecuada.
R4: Si usas la estación de carga de PowerA, comprueba que está conectada correctamente a un toma de corriente con alimentación de CA.

Xbox One X

Xbox Series X

AVVERTENCIA: FUGA DE LA BATERÍA

La fuga de los componentes que contiene el pack de baterías o la combustión de los componentes del producto puede provocar lesiones personales y dañar el mando de juego. Evita el contacto con la piel. Si se produce el contacto, lávate inmediatamente y a fondo con agua y jabón. Si el líquido que se fuga de un pack de baterías entra en contacto con los ojos, lávatelos inmediatamente a fondo con agua y ponte en contacto con un profesional sanitario para recibir ayuda."

PORTUGUEUSE

Xbox One X

Xbox Series X

CONTÉUDO:

- (2) baterias recarregáveis de 1100 mAh
- (4) portas para carregamento de bateria
- Cabo de carregamento USB de 3 m (10 pés)
- Manual do Utilizador"

UTILIZAÇÃO:

- Instala a bateria recarregável no compartimento da bateria do teu comando sem fios da Xbox.
- Liga a porta para carregamento de bateria correta à parte de trás do comando sem fios da Xbox depois de verificar a parte inferior da porta: 'B' para a Xbox Series X e 'A' para a Xbox One.
- Liga a porta para carregamento de bateria ao comando.
- Liga o cabo USB à bateria e à Xbox.
- Verifica a cor do LED para ficares a saber o estado do carregamento; âmbar enquanto está a carregar e branco quando estiver totalmente carregado.

Nota: Para verificares o nível da bateria, observa o ecrã da Xbox. A bateria também pode ser carregada quando não estiver colocada no comando. O comando continua a funcionar enquanto a bateria estiver a ser carregada colocada no comando.

RESOLUCIÓN DE PROBLEMAS

- CARREGAMENTO:**
- Usa apenas o cabo de carregamento USB original/ incluído.
 - Não ligue o cabo de carregamento USB a quaisquer transformadores CA USB.
 - Não carregues as tuas baterias recarregáveis de 1100 mAh em superfícies inflamáveis, por exemplo, colchões, sofás e outros materiais inflamáveis.
 - Não deixes as baterias sem supervisão por muito tempo.
 - Não tapes o teu comando com cobertores, almofadas, roupa de cama, etc. enquanto estiver a carregar.
 - Garante uma ventilação adequada."

RESOLUÇÃO DE PROBLEMAS

- P1: A bateria recarregável do kit de jogo e carregamento não está a carregar.
R1: A bateria recarregável necessita de uma fonte USB com alimentação para carregar. Confirma se a Xbox está ligada.
R2: Confirma se o cabo de carregamento USB está corretamente ligado à bateria recarregável e/ou à consola Xbox.
R3: Confirma se a bateria recarregável e a porta para carregamento de bateria estão devidamente instaladas.
P2: A bateria recarregável do kit de jogo e carregamento não está a carregar no suporte de carregamento ou na estação de carregamento PowerA.
R1. Confirma se o comando sem fios da Xbox está corretamente colocado no suporte de carregamento ou na estação de carregamento PowerA.
R2: Confirma se o suporte de carregamento ou a estação de carregamento está devidamente ligado a uma porta USB com alimentação.
R3: Confirma se a base de carregamento do suporte de carregamento ou da estação de carregamento está pressionada para baixo na posição de carregamento.
R4: Se estiveres a utilizar a estação de carregamento PowerA, confirma se está devidamente ligada a uma tomada elétrica de CA.

AVISO - FUGA NA BATERIA

Uma fuga dos componentes contidos na bateria ou a combustão dos componentes do produto pode causar lesões, além de danificar o comando. Evita o contacto com a pele. Em caso de contacto, lava imediatamente com água e sabão abundantes. Se o líquido em fuga de uma bateria entrar em contacto com os teus olhos, lava imediatamente com água abundante e consulta um profissional médico para receberes ajuda.